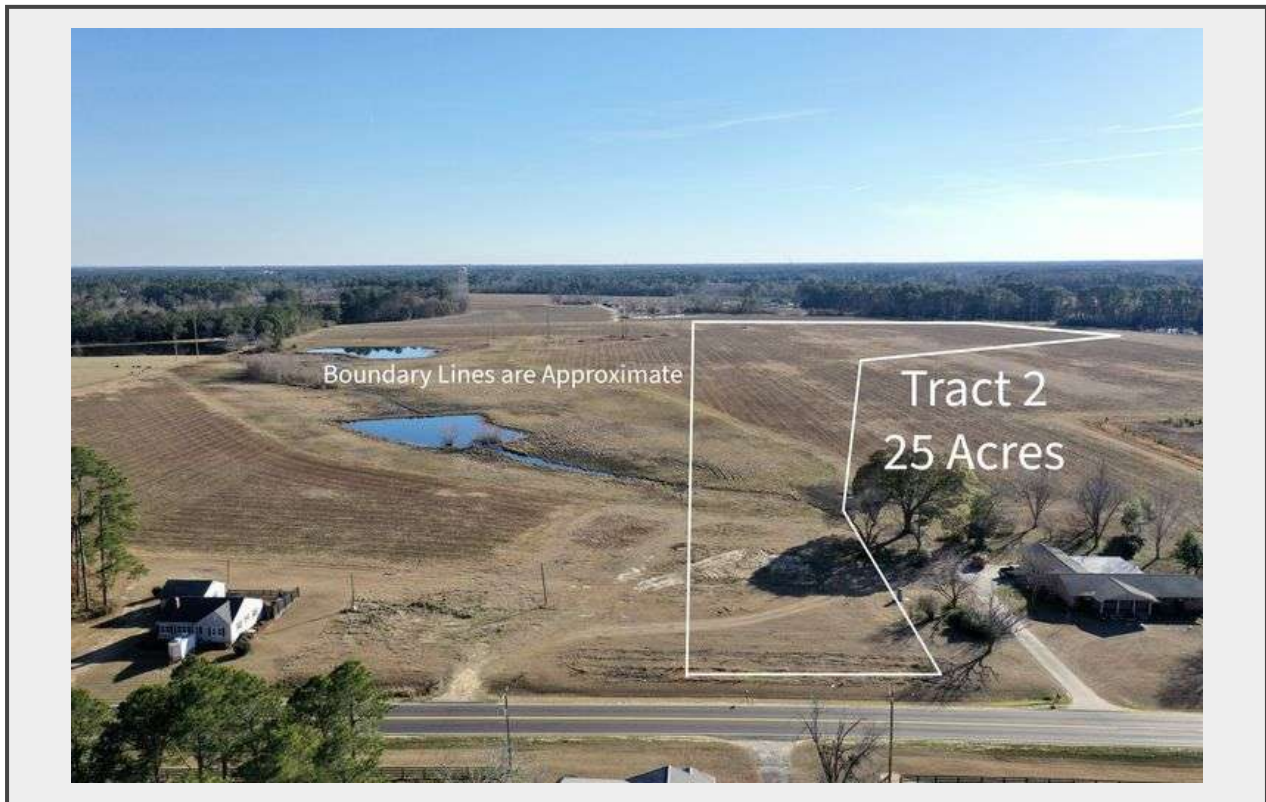


**Sale Name:** Brighton Rd - 4 Tracts - 87 +/- Total Acres

**LOT 2 - Tract 2 - 25 Acres**



**Description**

Spanning **approximately 25 acres**, this stunning tract is a rare find in Tifton, GA, offering endless potential for a private estate or investment property. Situated just off **Brighton Road**, Tract 2 features ample space and privacy, with the **final acreage to be determined by survey**.

**Key Features:**

- **Approximately 25 acres**, providing generous space for a custom estate.
- **R-1 Residential zoning**, ensuring a low-density, residential setting.
- Protective **covenants** in place to maintain property value and development integrity.
- Convenient access to Interstate 75 and the amenities of Tifton, while still offering the peace and quiet of country living.

With its size and zoning, Tract 2 is perfect for those seeking room to create an expansive estate or for buyers looking to invest in a property with long-term value. This tract's natural beauty and privacy make it a standout option in South Georgia.

**Auction Details**

Don't miss your opportunity to secure **Tract 2** at auction! For more information or to schedule a viewing, contact us today. Whether you're planning a custom home or expanding your property portfolio, this 25-acre parcel is an excellent choice.

**Quantity:** 1



[https://  
auctions.popetherealestatecompany.auctioneersoft](https://auctions.popetherealestatecompany.auctioneersoft)